

Holiday Inn Birmingham M6, Jct.7 - Leisure Facilities



[View the Access Guide](#)

Chapel Lane, Great Barr, Birmingham, West Midlands B43 7BG

01604 931 504

www.ihg.com/holidayinn/hotels/gb/en/birmingham/bhxgb/hoteldetail (<https://www.ihg.com/holidayinn/hotels/gb/en/birmingham/bhxgb/hoteldetail>)

Guide Last Updated: 13/02/2018

[Something changed? \(/contact/something_changed?destination=/access-guide/kew-green/holiday-inn-birmingham-m6-jct7-leisure-facilities\)](#)



Google

(<https://maps.google.com/maps?ll=52.556298,-1.933424&z=14&t=m&hl=en-US&q=US&mapclient=apiv3>)

Map data ©2018 Google

Access Guide



[Explain these icons \(/our-icons\)](#)

[Expand all](#) [Collapse all](#)

Leisure Facilities Introduction

[Collapse -](#)

Related Access Guide(s)

[Collapse -](#)

- [For the Holiday Inn Birmingham M6, Jct.7 DisabledGo access guide please click here \(new tab\) \(https://www.disabledgo.com/access-guide/kew-green/holiday-inn-birmingham-m6-jct7\).](https://www.disabledgo.com/access-guide/kew-green/holiday-inn-birmingham-m6-jct7)

Leisure Facilities Information

[Collapse -](#)

- The leisure facilities are located at the rear left of the hotel.
- The leisure facilities can be accessed from the hotel.

Getting Here

[Collapse -](#)

By Road

Collapse -

- This hotel is located between Birmingham and Walsall, just off Junction 7 of the M6. The hotel is located on the A34.
- This hotel has a car park which is free for all users.

By Bus

Collapse -

- There is not a bus stop within 150 metres of the hotel.
- The nearest bus stop is located on the opposite side of the A34, approximately 400 metres from the hotel.
- [For more information on buses in the West Midlands please click here \(opens new tab\) \(http://www.traveline.info/\)](http://www.traveline.info/).

By Train

Collapse -

- The nearest Railway Station is Hamstead.
- Hamstead Station is situated to the north of Birmingham, located approximately 2 miles from the hotel. There are bus and taxi routes to the hotel from the station.
- [For more information on National Rail please click here \(opens new tab\) \(http://www.nationalrail.co.uk/stations/hsd/details.html\)](http://www.nationalrail.co.uk/stations/hsd/details.html).

Getting Help and Assistance

Collapse -

- There is a member of staff available for help and assistance.
- Staff receive disability awareness/equality training.
- Staff do not receive deaf awareness training.
- There is not a member of staff trained in British Sign Language.
- British Sign Language interpreters cannot be provided on request.
- The alternative formats documents can be provided in include; large print on request.
- There is an assistance dog toilet or toileting area at the venue/near by.
- The assistance dog toilet or toileting area is located on the grass areas surrounding the hotel.
- Water bowls for assistance dogs are available.
- There are mobility aids available.
- The mobility aids available include ceiling track hoists.
- To obtain mobility aids please contact reception.

Parking (Front Car Park)

Collapse -

Parking

Collapse -

- The hotel does have its own parking facilities.
- The car park is located in front of the hotel.
- The car park type is open air/surface.
- The car park does not have a height restriction barrier.
- The car park does not have a barrier control system.
- The car park surface is tarmac.
- There is a/are Blue Badge parking bay(s) available.
- The Blue Badge bay(s) is/are clearly marked and signposted.
- There is/are 6 designated Blue Badge parking bay(s) within the car park.
- The dimensions of the designated Blue Badge parking bay(s) surveyed are 349cm x 616cm (11ft 5in x 20ft 3in).
- There is a 120cm hatched zone around the Blue Badge parking bay(s).
- Parking spaces for Blue Badge holders do not need to be booked in advance.
- Clearly marked/signposted parent and child parking bays are not available.
- All parking spaces are provided on a first come first served basis.

- There is also an overflow car park for visitors.

Paying

Collapse -

- There are not parking charges for the car park.

Access from the Car Park

Collapse -

- The route from the car park to the entrance is accessible to a wheelchair user with assistance.
- Assistance may be required because there is/are dropped kerbs.
- The entrance is clearly visible from the car park.
- The surface on the approach to the entrance is tarmac.
- There is not a road to cross between the car park and the entrance.
- There is tactile paving on dropped kerbs between the car park and the entrance.
- The nearest designated Blue Badge parking bay is approximately 17m (18yd 1ft) from the hotel main entrance.

Drop-off Point(s)

Collapse -

- There is not a/are not clearly marked drop-off point(s).

Comments

Collapse -

- Visitors must register their cars at reception, the bar or leisure facilities reception for free parking. Failure to do so may end in a fine.
- The height to the top of the touchscreen at the main reception desk is 132cm.
- The height to the top of the touchscreen at the bar is 145cm.
- The height of the touchscreen at the leisure facilities reception desk is 150cm.



1



2



3



4



5



6



7

Parking (Left Side Car Park/Leisure Facilities)

Collapse -

Parking

Collapse -

- The hotel does have its own parking facilities.
- The car park is located at the side of the hotel.
- The car park type is open air/surface.
- The car park does not have a height restriction barrier.
- The car park does not have a barrier control system.
- The car park surface is tarmac.

- There is a/are Blue Badge parking bay(s) available.
- The Blue Badge bay(s) is/are clearly marked and signposted.
- There is/are 2 designated Blue Badge parking bay(s) within the car park.
- The dimensions of the designated Blue Badge parking bay(s) surveyed are 360cm x 590cm (11ft 10in x 19ft 4in).
- There is a 120cm hatched zone around the Blue Badge parking bay(s).
- Parking spaces for Blue Badge holders do not need to be booked in advance.
- Clearly marked/signposted parent and child parking bays are not available.
- All parking spaces are provided on a first come first served basis.
- There is an additional car park for visitors.

Paying

Collapse -

- There are not parking charges for the car park.

Access from the Car Park

Collapse -

- The route from the car park to the entrance is accessible to a wheelchair user with assistance.
- Assistance may be required because there is/are dropped kerbs.
- The entrance is not clearly visible from the car park.
- The route from the car park to the entrance is not clearly signposted.
- The surface on the approach to the entrance is tarmac.
- There is not a road to cross between the car park and the entrance.
- There is tactile paving on dropped kerbs between the car park and the entrance.
- The nearest designated Blue Badge parking bay is approximately 39m (42yd 1ft) from the leisure facilities entrance.

Drop-off Point(s)

Collapse -

- There is not a/are not clearly marked drop-off point(s).

Comments

Collapse -

- Visitors must register their cars at reception, the bar or leisure facilities reception for free parking. Failure to do so may end in a fine.
- The height to the top of the touchscreen at the main reception desk is 132cm.
- The height to the top of the touchscreen at the bar is 145cm.
- The height of the touchscreen at the leisure facilities reception desk is 150cm.



1



2



3



4



5



6



7

Outside Access (Hotel Main Entrance)

Collapse -

Entrance

Collapse -

- This information is for the entrance located at the front of the hotel.
- The entrance area/door is clearly signed.
- There is step-free access at this entrance.
- There is a canopy or recess which provides weather protection at this entrance.
- The entrance door(s) does not/do not contrast visually with its immediate surroundings.
- The bell/buzzer is not in a suitable position to allow wheelchair users to gain access.
- The height of the bell/buzzer is 140cm (4ft 7in).
- The intercom is not in a suitable position to allow wheelchair users to gain access.
- The height of the intercom is 160cm (5ft 3in).
- The main door(s) open(s) automatically.
- The door(s) is/are double width.
- The width of the door opening is 145cm.
- There is a second set of doors.
- The door(s) open(s) automatically.
- The door(s) is/are double width.
- The width of the door opening is 145cm.
- There is a member of staff available for assistance at this entrance.

Comments

Collapse -

- This entrance gives direct access to the second floor.



1



2



3



4

Getting Around

Collapse -

Access

Collapse -

- There is step-free access throughout the first floor.
- There is a slight ramp, with no handrails, for access to restaurant/bar.
- This ramp is located on the first floor in the doorway to the restaurant/bar (shown in photographs 1 and 2).

Circulation

Collapse -

- There are doors in corridors/walkways which have to be opened manually.
- The type of flooring in corridors/walkways is carpet, tiles and laminate.
- There is some flooring in corridors/walkways which includes patterns or colours which could be confusing or look like steps or holes to some people.
- There is some flooring in corridors/walkways which is shiny and could cause issues with glare or look slippery to some people.
- There is good colour contrast between the walls and floor in the majority of corridors/walkways.
- The lighting levels are varied.
- Access to other floors/levels is via stairs.

Signage

Collapse -

- Wayfinding signage is provided.
- The colour, design and typeface of signs is consistent throughout the building.

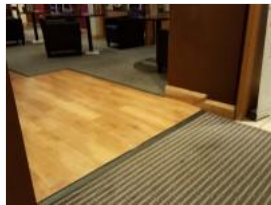
Audio

Collapse -

- This venue does play background music in public areas.
- Music is played in the reception lobby and restaurant/bar.
- There is a hearing assistance system in the public areas of the building.
- The system is a portable loop.
- The portable hearing loop is available from the hotel reception desk.
- The hearing assistance system is available only on request.



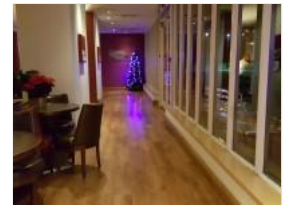
1



2



3



4



5



6

Other Floors

Collapse -

Stairs

Collapse -

- Stairs can be used to access other floors.
- The stairs are for public use.
- The stairs are located in the corridor to the left of the reception lobby.
- The stairs are approximately 38m from the hotel main entrance.
- Signs indicating the location of the stairs are not available from the entrance.
- There are manual, heavy, double doors to enter and exit the stairwell on all floors.
- The floors which are accessible by stairs are 1, 2 and 3.
- There are 14 steps between floors.
- The height of the step(s) is/are not between the recommended 15cm and 18cm.
- The height of the step(s) is/are 19cm.
- The going of the step(s) is/are not between the recommended 30cm and 45cm.
- The steps are clearly marked.
- There is a/are handrail(s) at the step(s).
- The steps have a handrail on both sides.
- Handrails are at the recommended height (90cm-100cm).
- Handrails do cover the flight of stairs throughout its length.
- Handrails are easy to grip.
- Handrails do extend horizontally beyond the first and last steps.
- There is a landing.
- Clear signs indicating the facilities on each floor are provided on landings.
- The lighting levels at the steps are good.

Other Information

Collapse -

- The service(s) on the floors which are not accessible is/are The Queslett Room, The Leisure Facilities, Rooms 101-168 and Rooms 301-368.

Comments

Collapse -

- Floor 1 of the hotel, the Queslett Room and the Leisure Facilities cannot be accessed from this stairway but can be accessed by using the leisure facilities entrance.
- Please see the leisure facilities access guide for more information.



1



2



3



4

Entrance (Leisure Facilities Internal Entrance)

Collapse -

Entrance

Collapse -

- This information is for the entrance located on the first floor, at the rear left of the hotel.
- The entrance area/door is clearly signed.
- There is stepped access at this entrance.
- The entrance door(s) does not/do not contrast visually with its immediate surroundings.
- The main door(s) open(s) away from you (push).
- The door(s) is/are single width with a locked extension leaf.
- The door(s) is/are heavy.
- The width of the door opening is 70cm.
- There is a second set of doors.
- The door(s) open(s) away from you (push).
- The door(s) is/are single width.
- The door(s) is/are heavy.
- The width of the door opening is 81cm.
- There is a member of staff available for assistance at this entrance.



1



2

Opening Times (Leisure Facilities)

Collapse -

- Monday 06:30 - 22:00.
- Tuesday 06:30 - 22:00.
- Wednesday 06:30 - 22:00.
- Thursday 06:30 - 22:00.

- Friday 06:30 - 22:00.
- Saturday 07:00 - 22:00.
- Sunday 07:00 - 22:00.

Outside Access (Leisure Facilities External Entrance)

Collapse -

Entrance

Collapse -

- This information is for the entrance located at the front of the leisure facilities building, leading from the side/leisure facilities car park.
- The entrance area/door is clearly signed.
- There is step-free access at this entrance.
- There is a canopy or recess which provides weather protection at this entrance.
- There is a dark mat or floor marking at this entrance that might be perceived as a hole.
- The entrance door(s) does not/do not contrast visually with its immediate surroundings.
- The main door(s) open(s) away from you (push).
- The door(s) is/are double width.
- The door(s) is/are heavy.
- The width of the door opening is 144cm.
- There is a second set of doors.
- The door(s) open(s) towards you (pull).
- The door(s) is/are double width.
- The door(s) is/are heavy.
- The width of the door opening is 142cm.
- There is a member of staff available for assistance at this entrance.
- There is a slope with a very easy incline.



1



2



3



4

Reception

Collapse -

Reception

Collapse -

- The reception point is located to the left as you enter via the leisure facilities external entrance.
- The reception point is approximately 3m (3yd 10in) from the leisure facilities external entrance.
- The reception area/desk is clearly visible from the entrance.
- There is step-free access to the reception point.
- There is a clear unobstructed route to the reception point.
- There are windows, TVs, glazed screens or mirrors behind the reception point which could adversely affect the ability of someone to lip read.
- The reception counter is not placed in front of a background which is patterned.
- The lighting levels at the reception point are good.
- The height of the reception counter is high (110cm+).
- There is sufficient space to write or sign documents on the counter.
- There is a lowered section of the counter.
- The lowered section of the counter is not at the recommended height of 76cm.
- There is sufficient space to write or sign documents on the lowered section of the counter.
- There is not a clear knee recess beneath the lowered section of the counter.

- The counter is staffed.
- Clipboards can be provided to anyone who is unable to use the desk.
- There is a hearing assistance system at the reception point.
- The type of system is a fixed loop.
- The hearing assistance system is signed.
- Staff are trained to use the system.
- Signs and universally accepted symbols or pictograms, indicating lifts, stairs, WCs, circulation routes and other parts of the building are not provided in the reception area.
- The type of flooring in the reception area is tiles and laminate.

Reception Waiting Area

Collapse -

- There is a waiting area close to the reception point.
- Access to the waiting area is unobstructed.
- There is a mixture of seating with and without armrests.
- There is sufficient space for a wheelchair user to use the waiting area.



1



2



3



4

Ramp(s) or Slope(s) (Fitness Suite)

Collapse -

- There is a ramp/slope located in the corridor leading to the fitness suite.
- The ramp/slope is used to access the fitness suite.
- The gradient of the ramp/slope is steep.
- The ramp/slope is permanent.
- There is a level landing at the top of the ramp/slope.
- There is not a/are not handrail(s) at the ramp.
- The lighting levels at the ramp/slope are good.



1



2

Fitness Suite

Collapse -

Access to Fitness Suite

Collapse -

- The fitness suite is located in the corridor to the right of reception as you enter via the leisure facilities external entrance.
- The fitness suite is 22m (24yd 2in) from the leisure facilities external entrance.
- There is not level access to the fitness suite.
- There are doors into the fitness suite.
- The doors open away from you (push).
- The doors are double.

- The doors are heavy.
- The opening is 142cm (4ft 8in) wide.

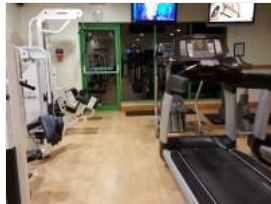
Fitness Suite (General)

Collapse -

- Staff receive some training in assisting disabled people.
- Training provided is by the hotel.
- Equipment suitable for mobility or sensory impaired users includes free weights and rowing machines.
- A portable hearing loop is available for induction.
- Staff are trained to use the portable hearing loop.
- There is not clear manoeuvring space between equipment.
- There is level access to all of the equipment.



1



2



3



4

Entrance (Swimming Pool Accessible Entrance)

Collapse -

Entrance

Collapse -

- This information is for the entrance located in the reception foyer.
- The entrance area/door is not clearly signed.
- There is step-free access at this entrance.
- The entrance door(s) does not/do not contrast visually with its immediate surroundings.
- The main door(s) open(s) both ways.
- The door(s) is/are single width.
- The door(s) is/are heavy.
- The width of the door opening is 76cm.

Comments

Collapse -

- This entrance overcomes the ramp leading from the female/male changing rooms.



1



2

Swimming Pool

Collapse -

- There is not level access from the changing area to the swimming pool.
- There is not a ramped entrance into the water.
- There is a wet side chair available.
- There is not a hoist for wheelchair users to access the water.

- There are steps into the swimming pool.
- There are 5 steps.
- There is a ladder type entrance into the water.
- There is a handrail on both sides of the ladder.



1



2



3



4

Standard Shower (Poolside Shower)

Collapse -

- Shower facilities are available.
- The shower(s) surveyed is/are located in the swimming pool area.
- There is level access to the services from the shower facilities.



1



2

Ramp(s) or Slope(s) (Changing Rooms to Swimming Pool)

Collapse -

- The ramp/slope is used to access used to access the swimming pool from the female/male changing area.
- The gradient of the ramp/slope is steep.
- The ramp/slope is permanent.
- There is not a level landing at the top of the ramp/slope.
- There is not a/are not handrail(s) at the ramp.
- The width of the ramp/slope is 74cm (2ft 5in).
- The lighting levels at the ramp/slope are good.

Comments

Collapse -

- The corridor leading from the female/male changing rooms has a water drainage gully.
- The gully also creates a ramp and is shown in photographs 3 and 4.
- These ramps can be overcome by using the swimming pool accessible entrance located in the reception foyer.



1



2



3



4

Changing Area

Collapse -

Changing Area

Collapse -

- There is a/are changing area(s) available.
- The changing area that was surveyed is located in the corridor to the right of reception.
- The changing area is approximately 4m from the leisure facilities external entrance.
- The changing area is approximately 4m from reception.
- The changing area is approximately 5m from the swimming pool.
- There is step-free access to the changing area.
- The facilities available within the changing area include; standard changing rooms/cubicles, standard showers and standard toilets.
- This is a male changing area.
- Similar female changing area(s) are available.
- The door(s) open(s) away from you (push).
- The door(s) is/are single width.
- The door(s) is/are heavy.
- The width of the door opening is 78cm.
- The type of flooring in the changing area is tiles.
- There is not a flashing fire alarm beacon within the changing area.
- There are changing benches or seats within the changing area.
- There are lockers within the changing area.
- There is a/are locker(s) within reach for a wheelchair user.
- There is not a water dispenser available.
- The lighting levels in the changing area are good.

Shower Facilities

Collapse -

- Shower facilities are available.
- There is step-free access to the shower facilities.
- Adjustable.
- The shower control type(s) is/are twist/turn.
- A shower chair is available.
- There is a/are wall-mounted grab rail(s) available for the shower(s).

Toilet Facilities

Collapse -

- Toilet facilities are available.
- There is step-free access to the toilet(s).
- An ambulant toilet with wall-mounted grab rails is available.
- There is a horizontal grab rail to the left of the seat.
- The wash basin(s) tap type is lever.
- The lighting levels in the toilet(s) are good.

Baby Changing Facilities

Collapse -

- Baby changing facilities are not available.



1



2



3



4