

Holiday Inn Birmingham M6, Jct.7



[View the Access Guide](#)

Chapel Lane, Great Barr, Birmingham, West Midlands B43 7BG

01604 931 504

www.ihg.com/holidayinn/hotels/gb/en/birmingham/bhxgb/hoteldetail (<https://www.ihg.com/holidayinn/hotels/gb/en/birmingham/bhxgb/hoteldetail>)

Guide Last Updated: 13/02/2018

[Something changed? \(/contact/something_changed?destination=/access-guide/kew-green/holiday-inn-birmingham-m6-jct7\)](#)



Google

(<https://maps.google.com/maps?ll=52.556298,-1.933424&z=14&t=m&hl=en-US&gl=US&mapclient=apiv3>)

Map data ©2018 Google

Access Guide



[Explain these icons \(/our-icons\)](#)

[Expand all](#) [Collapse all](#)

Hotel Introduction	Collapse -
<p>Related Access Guide(s)</p> <p style="text-align: right;">Collapse -</p> <ul style="list-style-type: none"> For the Holiday Inn Birmingham M6, Jct.7 - Leisure Facilities DisabledGo access guide please click here (new tab) (https://www.disabledgo.com/access-guide/holiday-inn/holiday-inn-birmingham-m6-jct7---leisure-facilities). 	
<p>Hotel Information</p> <p style="text-align: right;">Collapse -</p> <ul style="list-style-type: none"> The hotel has its own parking facilities. This hotel has its own restaurant located on the first floor. Conference/meeting facilities are available. The conference/meeting facilities are located on the ground and first floors. 	
<p>Room Information</p> <p style="text-align: right;">Collapse -</p> <ul style="list-style-type: none"> The hotel has 190 rooms in total. 	

- There is an/are accessible room(s) within the hotel.
- The accessible room(s) is/are located on the first floor.
- The hotel has 4 accessible room(s) with accessible ensuite facilities.
- There is/are 4 accessible room(s) with a bath.
- There is an/are adjoining room(s) available for the accessible room(s).
- There is/are 1 accessible room(s) with a ceiling track hoist.
- There is 1 accessible room with a bath, which has a ceiling track hoist.
- The accessible rooms are 75m - 81m from the hotel main entrance.
- There is a/are standard room(s) available on the ground floor.
- There is an/are adjoining room(s) available for the standard room(s).
- Rooms on other floors are accessed via stairs.

Auxiliary Aids

Collapse -

- Vibrating pillows with flashing beacons are available on request.
- Bed raisers are not available on request.
- Bath mats are available on request.
- All televisions have subtitles available.

Comments

Collapse -

- This hotel is built on a hill.
- The main entrance and all level services are on the second floor.
- The first floor standard rooms can be accessed by using the leisure facilities entrance.
- The third floor is accessed by stairs only.

Getting Here

Collapse -

By Road

Collapse -

- This hotel is located between Birmingham and Walsall, just off Junction 7 of the M6. The hotel is located on the A34.
- This hotel has a car park which is free for all users.

By Bus

Collapse -

- There is not a bus stop within 150 metres of the hotel.
- The nearest bus stop is located on the opposite side of the A34, approximately 400 metres from the hotel.
- [For more information on buses in the West Midlands please click here \(opens new tab\) \(http://www.traveline.info/\).](http://www.traveline.info/)

By Train

Collapse -

- The nearest Railway Station is Hamstead.
- Hamstead Station is situated to the north of Birmingham, located approximately 2 miles from the hotel. There are bus and taxi routes to the hotel from the station.
- [For more information on National Rail please click here \(opens new tab\) \(http://www.nationalrail.co.uk/stations/hsd/details.html\).](http://www.nationalrail.co.uk/stations/hsd/details.html)

Getting Help and Assistance

Collapse -

- There is a member of staff available for help and assistance.

- Staff receive disability awareness/equality training.
- Staff do not receive deaf awareness training.
- There is not a member of staff trained in British Sign Language.
- British Sign Language interpreters cannot be provided on request.
- The alternative formats documents can be provided in include; large print on request.
- There is an assistance dog toilet or toileting area at the venue/near by.
- The assistance dog toilet or toileting area is located on the grass areas surrounding the hotel.
- Water bowls for assistance dogs are available.
- There are mobility aids available.
- The mobility aids available include ceiling track hoists.
- To obtain mobility aids please contact reception.

Parking (Front Car Park)

Collapse -

Parking

Collapse -

- The hotel does have its own parking facilities.
- The car park is located in front of the hotel.
- The car park type is open air/surface.
- The car park does not have a height restriction barrier.
- The car park does not have a barrier control system.
- The car park surface is tarmac.
- There is a/are Blue Badge parking bay(s) available.
- The Blue Badge bay(s) is/are clearly marked and signposted.
- There is/are 6 designated Blue Badge parking bay(s) within the car park.
- The dimensions of the designated Blue Badge parking bay(s) surveyed are 349cm x 616cm (11ft 5in x 20ft 3in).
- There is a 120cm hatched zone around the Blue Badge parking bay(s).
- Parking spaces for Blue Badge holders do not need to be booked in advance.
- Clearly marked/signposted parent and child parking bays are not available.
- All parking spaces are provided on a first come first served basis.
- There is also an overflow car park for visitors.

Paying

Collapse -

- There are not parking charges for the car park.

Access from the Car Park

Collapse -

- The route from the car park to the entrance is accessible to a wheelchair user with assistance.
- Assistance may be required because there is/are dropped kerbs.
- The entrance is clearly visible from the car park.
- The surface on the approach to the entrance is tarmac.
- There is not a road to cross between the car park and the entrance.
- There is tactile paving on dropped kerbs between the car park and the entrance.
- The nearest designated Blue Badge parking bay is approximately 17m (18yd 1ft) from the hotel main entrance.

Drop-off Point(s)

Collapse -

- There is not a/are not clearly marked drop-off point(s).

Comments

Collapse -

- Visitors must register their cars at reception, the bar or leisure facilities reception for free parking. Failure to do so may end in a fine.
- The height to the top of the touchscreen at the main reception desk is 132cm.
- The height to the top of the touchscreen at the bar is 145cm.
- The height of the touchscreen at the leisure facilities reception desk is 150cm.



1



2



3



4



5



6



7

Parking (Left Side Car Park/Leisure Facilities)

Collapse -

Parking

Collapse -

- The hotel does have its own parking facilities.
- The car park is located at the side of the hotel.
- The car park type is open air/surface.
- The car park does not have a height restriction barrier.
- The car park does not have a barrier control system.
- The car park surface is tarmac.
- There is a/are Blue Badge parking bay(s) available.
- The Blue Badge bay(s) is/are clearly marked and signposted.
- There is/are 2 designated Blue Badge parking bay(s) within the car park.
- The dimensions of the designated Blue Badge parking bay(s) surveyed are 360cm x 590cm (11ft 10in x 19ft 4in).
- There is a 120cm hatched zone around the Blue Badge parking bay(s).
- Parking spaces for Blue Badge holders do not need to be booked in advance.
- Clearly marked/signposted parent and child parking bays are not available.
- All parking spaces are provided on a first come first served basis.
- There is an additional car park for visitors.

Paying

Collapse -

- There are not parking charges for the car park.

Access from the Car Park

Collapse -

- The route from the car park to the entrance is accessible to a wheelchair user with assistance.
- Assistance may be required because there is/are dropped kerbs.
- The entrance is not clearly visible from the car park.
- The route from the car park to the entrance is not clearly signposted.
- The surface on the approach to the entrance is tarmac.
- There is not a road to cross between the car park and the entrance.
- There is tactile paving on dropped kerbs between the car park and the entrance.

- The nearest designated Blue Badge parking bay is approximately 39m (42yd 1ft) from the leisure facilities entrance.

Drop-off Point(s)

Collapse -

- There is not a/are not clearly marked drop-off point(s).

Comments

Collapse -

- Visitors must register their cars at reception, the bar or leisure facilities reception for free parking. Failure to do so may end in a fine.
- The height to the top of the touchscreen at the main reception desk is 132cm.
- The height to the top of the touchscreen at the bar is 145cm.
- The height of the touchscreen at the leisure facilities reception desk is 150cm.



1



2



3



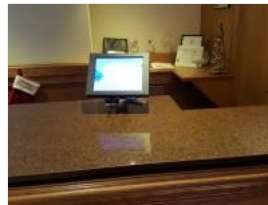
4



5



6



7

Outside Access (Hotel Main Entrance)

Collapse -

Entrance

Collapse -

- This information is for the entrance located at the front of the hotel.
- The entrance area/door is clearly signed.
- There is step-free access at this entrance.
- There is a canopy or recess which provides weather protection at this entrance.
- The entrance door(s) does not/do not contrast visually with its immediate surroundings.
- The bell/buzzer is not in a suitable position to allow wheelchair users to gain access.
- The height of the bell/buzzer is 140cm (4ft 7in).
- The intercom is not in a suitable position to allow wheelchair users to gain access.
- The height of the intercom is 160cm (5ft 3in).
- The main door(s) open(s) automatically.
- The door(s) is/are double width.
- The width of the door opening is 145cm.
- There is a second set of doors.
- The door(s) open(s) automatically.
- The door(s) is/are double width.
- The width of the door opening is 145cm.
- There is a member of staff available for assistance at this entrance.

Comments

Collapse -

- This entrance gives direct access to the second floor.



1



2



3



4

Outside Access (Restaurant/Bar External Entrance)

Collapse -

Entrance

Collapse -

- This information is for the entrance located at the front right of the hotel.
- The entrance area/door is clearly signed.
- There is ramped/sloped and stepped access at this entrance.
- There is a canopy or recess which provides weather protection at this entrance.
- The entrance door(s) does not/do not contrast visually with its immediate surroundings.
- The main door(s) open(s) towards you (pull).
- The door(s) is/are double width.
- The door(s) is/are heavy.
- The width of the door opening is 160cm.
- There is a member of staff available for assistance at this entrance.

Ramp/Slope

Collapse -

- The ramp/slope is located in front of the entrance.
- The gradient of the ramp/slope is steep.
- The ramp/slope is permanent.
- There is not a level landing at the top of the ramp/slope.
- There is not a/are not handrail(s) at the ramp.
- The ramp/slope does not bypass the step(s).

Step(s)

Collapse -

- The step(s) is/are located leading from the car park.
- There is/are 1 step(s).
- The step(s) is/are clearly marked.
- The height of the step(s) is/are between 15cm and 18cm.
- The going of the step(s) is/are not between 30cm and 45cm.
- There is not a/are not handrail(s) at the step(s).



1



2



3



4

Outside Access (Hotel Rear Entrance)

Collapse -

Entrance

Collapse -

- This information is for the entrance located at the rear of the hotel.
- The entrance area/door is not clearly signed.
- There is ramped/sloped access at this entrance.
- There is not a canopy or recess which provides weather protection at this entrance.
- There is a dark mat or floor marking at this entrance that might be perceived as a hole.
- The entrance door(s) does not/do not contrast visually with its immediate surroundings.
- The main door(s) open(s) towards you (pull).
- The door(s) is/are double width but one door is locked.
- The door(s) is/are heavy.
- The width of the door opening is 64cm.
- There is a small lip on the threshold of the entrance, with a height of 2cm or below.
- There is not a member of staff available for assistance at this entrance.

Ramp/Slope

Collapse -

- The ramp/slope is located on the path leading to the entrance.
- The gradient of the ramp/slope is steep.
- The ramp/slope is permanent.
- There is a level landing at the top of the ramp/slope.
- There is a/are handrail(s) at the ramp.
- The handrail(s) is/are on both sides.

Comments

Collapse -

- This entrance gives access to the landing in the stairwell between the first and second floors.



1



2



3



4



5

Reception

Collapse -

Reception

Collapse -

- The reception point is located on the second floor, to the left as you enter the hotel main entrance.
- The reception point is approximately 3m (3yd 10in) from the hotel main entrance.
- The reception area/desk is clearly visible from the entrance.
- There is step-free access to the reception point.

- There is a clear unobstructed route to the reception point.
- There are no windows, TVs, glazed screens or mirrors behind the reception point which could adversely affect the ability of someone to lip read.
- The reception counter is not placed in front of a background which is patterned.
- The lighting levels at the reception point are good.
- The height of the reception counter is high (110cm+).
- There is sufficient space to write or sign documents on the counter.
- There is a lowered section of the counter.
- The lowered section of the counter is not at the recommended height of 76cm.
- There is sufficient space to write or sign documents on the lowered section of the counter.
- There is a clear knee recess beneath the lowered section of the counter.
- The clear knee recess does not have the recommended dimensions of 70cm (height) x 50cm (depth).
- The counter is staffed.
- Clipboards can be provided to anyone who is unable to use the desk.
- There is a hearing assistance system at the reception point.
- The type of system is a fixed loop.
- The hearing assistance system is signed.
- Staff are trained to use the system.
- Signs and universally accepted symbols or pictograms, indicating lifts, stairs, WCs, circulation routes and other parts of the building are provided in the reception area.
- The type of flooring in the reception area is tiles.

Reception Waiting Area

Collapse -

- There is a waiting area close to the reception point.
- Access to the waiting area is unobstructed.
- There are sofas only in the waiting area.
- There is sufficient space for a wheelchair user to use the waiting area.



1



2



3



4

Getting Around

Collapse -

Access

Collapse -

- There is step-free access throughout the first floor.
- There is a slight ramp, with no handrails, for access to restaurant/bar.
- This ramp is located on the first floor in the doorway to the restaurant/bar (shown in photographs 1 and 2).

Circulation

Collapse -

- There are doors in corridors/walkways which have to be opened manually.
- The type of flooring in corridors/walkways is carpet, tiles and laminate.
- There is some flooring in corridors/walkways which includes patterns or colours which could be confusing or look like steps or holes to some people.
- There is some flooring in corridors/walkways which is shiny and could cause issues with glare or look slippery to some people.
- There is good colour contrast between the walls and floor in the majority of corridors/walkways.
- The lighting levels are varied.

- Access to other floors/levels is via stairs.

Signage

Collapse -

- Wayfinding signage is provided.
- The colour, design and typeface of signs is consistent throughout the building.

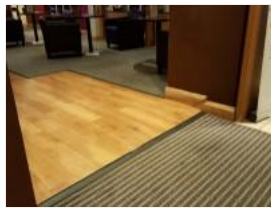
Audio

Collapse -

- This venue does play background music in public areas.
- Music is played in the reception lobby and restaurant/bar.
- There is a hearing assistance system in the public areas of the building.
- The system is a portable loop.
- The portable hearing loop is available from the hotel reception desk.
- The hearing assistance system is available only on request.



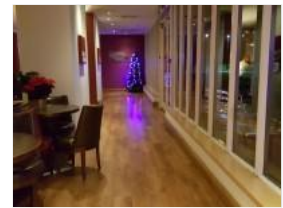
1



2



3



4



5



6

Eating and Drinking (Lounge Bar)

Collapse -

- The following information is for the bar.
- The bar is located on the second floor, to the right of the reception lobby.
- There is ramped/sloped access to the bar.
- Full table service is not available.
- Food and/or drinks are ordered from the service counter.
- Food and/or drinks can be brought to the table.
- The height of the service counter is high (110cm+).
- There is not a lowered section of the counter.
- There is not a hearing assistance system.
- There is step-free access within the bar.
- There is ample room for a wheelchair user to manoeuvre.
- This area does play background music.
- The type of flooring in this area is carpet and laminate.
- No tables are permanently fixed.
- No chairs are permanently fixed.
- Some chairs have armrests on both sides.
- The nearest table is approximately 2m from the entrance/opening.
- The nearest table is approximately 3m from the till/counter.
- The distance between the floor and the lowest table is 36cm.
- The distance between the floor and the highest table is 109cm.

- The standard height for tables is 64cm.
- Plastic/takeaway cups are available.
- Plastic/takeaway cutlery is not available.
- Drinking straws are available.
- There are hand held menus and menu boards/signs available.
- Menus are not available in Braille.
- Menus are not available in large print.
- Picture menus are not available.
- Menus are clearly written.
- Menus are presented in contrasting colours.
- The type of food served here is hot and cold meals and snacks.
- The lighting levels are good.



1



2



3



4



5



6

Eating and Drinking (Traders Restaurant)

Collapse -

- The following information is for the restaurant.
- The restaurant is located on the second floor, to the right of the reception lobby.
- There is ramped/sloped access to the restaurant.
- Full table service is available.
- There is not a hearing assistance system.
- There is step-free access within the restaurant.
- There is ample room for a wheelchair user to manoeuvre.
- This area does play background music.
- The type of flooring in this area is laminate.
- No tables are permanently fixed.
- Some chairs are permanently fixed.
- No chairs have armrests on both sides.
- The nearest table is approximately 4m from the entrance/opening.
- The standard height for tables is 72cm.
- Plastic/takeaway cups are available.
- Plastic/takeaway cutlery is not available.
- Drinking straws are available.
- There are hand held menus available.
- Menus are not available in Braille.
- Menus are not available in large print.
- Picture menus are not available.
- Menus are clearly written.
- Menus are presented in contrasting colours.
- The type of food served here is hot and cold meals and snacks.
- The lighting levels are good.

- Access to the additional seating area is via 2 medium height clearly marked steps.

Comments

Collapse -

- There are some seating areas with fixed chairs.
- These seating areas are accessed by 1 medium height step (14cm).
- The step does not have handrails.
- The step is clearly marked.



1



2



3



4



5

Conference / Meeting Facilities (Beacon Rooms 1, 2 and 3)

Collapse -

- Conference/meeting facilities are available.
- The conference/meeting facilities are located on the first floor, in the main corridor to the right, just past the bar.
- There is step-free access to the conference/meeting facilities.
- The door opening width(s) is/are 75cm+ for the room(s).
- There is a hearing assistance system for the room(s) available on request.
- There are no chairs with armrests on both sides within the room(s).
- There is sufficient space for a wheelchair user to manoeuvre within the room(s).
- The lighting levels in the room(s) are good.

Comments

Collapse -

- The Beacon Rooms 1, 2 and 3 have partition walls and can be opened to create 1 large room or sub divided into 2 or 3 smaller rooms.



1



2



3



4

Conference / Meeting Facilities (The Hillcrest Room)

Collapse -

- Conference/meeting facilities are available.
- The conference/meeting facilities are located on the first floor, in the corridor to the left of the reception lobby.
- There is step-free access to the conference/meeting facilities.
- The door opening width(s) is/are 75cm+ for the room(s).

- There is a hearing assistance system for the room(s) available on request.
- There is a/are chair(s) with armrests on both sides within the room(s).
- There is sufficient space for a wheelchair user to manoeuvre within the room(s).
- The lighting levels in the room(s) are good.

Comments

Collapse -

- There is a single door to enter a reception area and a set of double doors to enter the conference/meeting room.



1



2



3



4



5



6

Accessible Room(s) (Rooms 225, 226, 229 and 230)

Collapse -

Accessible Room Information

Collapse -

- The details in this section relates to the accessible room(s) with a lowered bath.
- This type of accessible room is located on the second floor, in the corridor to the rear right of the hotel.
- There is step-free access to this type of accessible room.
- Accessible rooms of this type have specifications that may vary.
- The ensuite transfer space for the accessible rooms varies from left to right.
- Guests need to open a door between the entrance and the room(s).
- The narrowest width of the corridor leading to the room surveyed was 127cm.

Bedroom Features

Collapse -

- The accessible room surveyed is located on the second floor, in the rear left corridor.
- The accessible room surveyed at the time of the visit was Room 230.
- There is step-free access to the accessible room surveyed.
- There is numbered signage on or near the accessible room door.
- The door is manual with a key card lock.
- The fob/card reader height is 106cm.
- The width of the door is 86cm (2ft 10in).
- There are lowered spy holes available.
- The bed type is double.
- The bed height is not adjustable.
- The height of the bed is 59cm (1ft 11in).
- The measurement between the bed base and floor is 12cm (5in).
- The bed is moveable.
- The room does have an unobstructed minimum turning space of 150cm x 150cm next to the bed.
- The height of the desk is 76cm.

- The desk is not height adjustable.
- The desk knee recess has the recommended dimensions of 70cm (height) x 50cm (depth).
- The room surveyed had a height adjustable chair with armrests and an armchair.
- Wardrobes have been adapted to allow use from a seated position.
- Light switches are between 75cm and 120cm (4ft) from floor level.
- Electric sockets are between 40cm and 100cm (4ft) from floor level.
- The window control type(s) for the room is a/are standard lever(s).
- There is an emergency alarm in the room.
- The emergency pull cord alarm is within reach and fully functional.
- The emergency alarm rings to reception.
- There is a flashing fire alarm beacon within the room.
- The type of flooring is carpet.

Ensuite Facilities

Collapse -

- The ensuite door opens outwards.
- The door weight is heavy.
- The door is locked by a twist lock.
- The width of the door to the ensuite is 87cm (2ft 10in).
- The dimensions of the ensuite are 225cm x 247cm (7ft 5in x 8ft 1in).
- The ensuite does have an unobstructed minimum turning space of 150cm x 150cm in front of the toilet seat.
- The ensuite has not got a non-slip floor.
- There is an emergency alarm within the ensuite.
- The emergency pull cord alarm is within reach and fully functional.
- The emergency alarm rings to reception.
- There is a flashing fire alarm beacon within the ensuite.
- Disposal facilities are available.
- There is a/are general domestic waste disposal units.
- There is a mirror.
- The mirror is not placed at a lower level or at an angle for ease of use.
- There is a shelf immediately next to or behind the toilet.
- The shelf is not between 90cm and 100cm.
- There is a wash basin.
- The wash basin cannot be reached from seated on the toilet.
- The wash basin is not placed higher than 74cm (2ft 5in).
- The height of the wash basin is 70cm.
- There are vertical wall-mounted grab rails on both sides of the wash basin.
- The tap type is lever.
- There is a mixer tap.
- There is not a soap dispenser.

Toilet Details

Collapse -

- The height of the toilet seat above floor level is 51cm (1ft 8in).
- The toilet has a lid.
- There is a lateral transfer space.
- As you face the toilet pan the transfer space is on the left.
- The lateral transfer space is 118cm (3ft 10in).
- There is a flush, however it is not on the transfer side.
- There is not a spatula type lever flush.
- There is a dropdown rail on the transfer side.
- There is a/are wall-mounted grab rail(s) available.
- As you face the toilet, the wall mounted grab rails are on both sides.
- There is a vertical wall-mounted grab rail on the transfer side.

- There is a horizontal wall-mounted grab rail on the opposite side of the seat to the transfer space.
- There is a toilet roll holder.
- The toilet roll holder can be reached from seated on the toilet.
- The toilet roll holder is not placed higher than 100cm (3ft 3in).
- The height of the toilet roll holder is 87cm (2ft 10in).

Bath Details

Collapse -

- The ensuite has a lowered bath.
- The height of the side of the bath from floor level is 48cm (1ft 7in).
- The tap type is twist/turn.
- There is a mixer tap.
- There is a shower over the bath.
- The shower head is height adjustable.
- The shower control type is lever.
- There is a/are wall-mounted grab rail(s) available for the bath.

Colour Contrast and Lighting

Collapse -

- The colour contrast between the external hotel room door and wall is poor.
- The colour contrast between the internal hotel room door and wall is poor.
- The colour contrast between the hotel room walls and floor is fair.
- The colour contrast between the external ensuite door and wall is good.
- The colour contrast between the internal ensuite door and wall is poor.
- The colour contrast between the ensuite walls and floor is fair.
- The colour contrast between the drop down rail(s) and wall is good.
- The colour contrast between the wall-mounted grab rail(s) and wall is good.
- The toilet seat colour contrast is poor.
- The lighting levels in the room are low.
- The lighting levels in the ensuite are low.

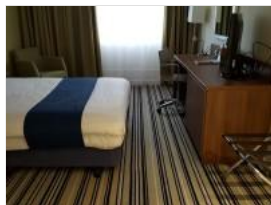
Comments

Collapse -

- Accessible Room 229 has a ceiling track hoist surrounding the bed and the bath.
- At the time of the survey the room was in use and could not be surveyed.



1



2



3



4



5



6



7



8

Standard Room(s) (Standard Room 231)

Collapse -

Bedroom Features

Collapse -

- The room surveyed is located on the second floor, in the rear left corridor.
- The room surveyed at the time of the visit was Room 231.
- There is step-free access to the room surveyed.
- There is numbered signage on or near the room door.
- The width of the door is 75cm (2ft 6in).
- The bed type is double.
- The height of the bed is 63cm (2ft 1in).
- The measurement between the bed base and floor is 21cm (8in).
- Light switches are not within 120cm (3ft 11in) from floor level.
- There is not an emergency alarm in the room.
- There is not a flashing fire alarm beacon within the room.
- The type of facilities within the ensuite include; a toilet, a wash basin and a shower.
- The ensuite door opens inwards.
- The width of the door to the ensuite is 71cm (2ft 4in).
- There is not an emergency alarm within the ensuite.
- There is not a flashing fire alarm beacon within the ensuite.
- The tap type is lever.
- There is a mixer tap.

Colour Contrast and Lighting

Collapse -

- The colour contrast between the external hotel room door and wall is poor.
- The colour contrast between the internal hotel room door and wall is poor.
- The colour contrast between the hotel room walls and floor is fair.
- The colour contrast between the external ensuite door and wall is good.
- The colour contrast between the internal ensuite door and wall is poor.
- The colour contrast between the walls and floor in the ensuite is fair.
- The lighting levels in the room are low.
- The lighting levels in the ensuite are good.

Comments

Collapse -

- There is a deep step to access the shower.



1



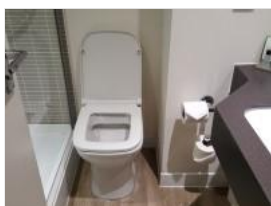
2



3



4



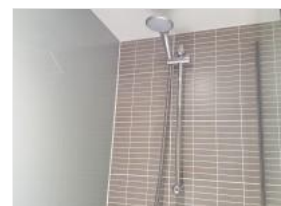
5



6



7



8



9

Other Floors

Collapse -

Stairs

Collapse -

- Stairs can be used to access other floors.
- The stairs are for public use.
- The stairs are located in the corridor to the left of the reception lobby.
- The stairs are approximately 38m from the hotel main entrance.
- Signs indicating the location of the stairs are not available from the entrance.
- There are manual, heavy, double doors to enter and exit the stairwell on all floors.
- The floors which are accessible by stairs are 1, 2 and 3.
- There are 14 steps between floors.
- The height of the step(s) is/are not between the recommended 15cm and 18cm.
- The height of the step(s) is/are 19cm.
- The going of the step(s) is/are not between the recommended 30cm and 45cm.
- The steps are clearly marked.
- There is a/are handrail(s) at the step(s).
- The steps have a handrail on both sides.
- Handrails are at the recommended height (90cm-100cm).
- Handrails do cover the flight of stairs throughout its length.
- Handrails are easy to grip.
- Handrails do extend horizontally beyond the first and last steps.
- There is a landing.
- Clear signs indicating the facilities on each floor are provided on landings.
- The lighting levels at the steps are good.

Other Information

Collapse -

- The service(s) on the floors which are not accessible is/are The Queslett Room, The Leisure Facilities, Rooms 101-168 and Rooms 301-368.

Comments

Collapse -

- Floor 1 of the hotel, the Queslett Room and the Leisure Facilities cannot be accessed from this stairway but can be accessed by using the leisure facilities entrance.
- Please see the leisure facilities access guide for more information.



1



2



3



4

Standard Room(s) (Executive Room 344)

Collapse -

Bedroom Features

Collapse -

- The room surveyed is located on the third floor, in the centre of the hotel on the left.
- The room surveyed at the time of the visit was room 344.
- There is stepped access to the room surveyed.
- There is numbered signage on or near the room door.
- The width of the door is 74cm (2ft 5in).
- The bed type is double.
- The height of the bed is 63cm (2ft 1in).
- The measurement between the bed base and floor is 12cm (5in).
- Light switches are not within 120cm (3ft 11in) from floor level.
- There is not an emergency alarm in the room.
- There is not a flashing fire alarm beacon within the room.
- The type of facilities within the ensuite include; a toilet, a wash basin, a bath and a shower.
- The ensuite door opens inwards.
- The width of the door to the ensuite is 71cm (2ft 4in).
- There is not an emergency alarm within the ensuite.
- There is not a flashing fire alarm beacon within the ensuite.
- The tap type is lever.
- There is a mixer tap.

Colour Contrast and Lighting

Collapse -

- The colour contrast between the external hotel room door and wall is poor.
- The colour contrast between the internal hotel room door and wall is poor.
- The colour contrast between the hotel room walls and floor is fair.
- The colour contrast between the external ensuite door and wall is good.
- The colour contrast between the internal ensuite door and wall is poor.
- The colour contrast between the walls and floor in the ensuite is fair.
- The lighting levels in the room are low.
- The lighting levels in the ensuite are good.



1



2



3



4



5



6



7



8

Accessible Toilet(s)

Collapse -

- There is an/are accessible toilet(s) for public use.

Location and Access

Collapse -

- The accessible toilet surveyed is not for the sole use of disabled people.
- This accessible toilet is located on the first floor, in the corridor to the left of the hotel, just past reception.
- This accessible toilet is approximately 16m (17yd 1ft) from the hotel main entrance.
- There is step-free access to the accessible toilet.

Features and Dimensions

Collapse -

- This is a shared toilet.
- A key is not required for the accessible toilet.
- There is tactile and pictorial signage on or near the toilet door.
- The door opens outwards.
- The door is heavy.
- The door is locked by a locking handle.
- The width of the accessible toilet door is 95cm (3ft 1in).
- The dimensions of the accessible toilet are 180cm x 225cm (5ft 11in x 7ft 5in).
- The accessible toilet does have an unobstructed minimum turning space of 150cm x 150cm.
- The toilet has not got a non-slip floor.
- There is a lateral transfer space.
- As you face the toilet pan the transfer space is on the right.
- The lateral transfer space is 112cm (3ft 8in).
- There is a flush on the transfer side.
- There is not a spatula type lever flush.
- There is no dropdown rail.
- There is an emergency alarm.
- The emergency pull cord alarm is not fully functional.
- The alarm was out of reach (higher than 10cm (4") from floor) when surveyed.
- There is not a flashing fire alarm beacon within the toilet.
- Disposal facilities are available in the toilet.
- There is a/are female sanitary, non-infectious waste and open waste paper bin disposal units.
- There is a/are coat hook(s).
- The height of the coat hook is 124cm from the floor.

Position of Fixtures

Collapse -

- There is a/are wall-mounted grab rail(s) available.
- As you face the toilet the wall-mounted grab rail(s) is/are on both sides.
- There is a vertical wall-mounted grab rail on the transfer side.
- There is a horizontal wall-mounted grab rail on the opposite side of the seat to the transfer space.
- There is a mirror.
- The mirror is not placed at a lower level or at an angle for ease of use.
- There is a shelf next to the toilet.
- The shelf is not between 90cm and 100cm.
- The toilet has a backrest and a cistern.
- The height of the toilet seat above floor level is 48cm (1ft 7in).
- There is a toilet roll holder.
- The toilet roll holder can be reached from seated on the toilet.
- The toilet roll holder is placed higher than 100cm (3ft 3in).
- The height of the toilet roll holder is 120cm (3ft 11in).
- There is a wash basin.
- The wash basin can be reached from seated on the toilet.
- The wash basin is placed higher than 74cm (2ft 5in).
- The height of the wash basin is 76cm (2ft 6in).
- There are vertical wall-mounted grab rails on both sides of the wash basin.
- The wash basin tap type is lever.

- There is a mixer tap.
- There is a soap dispenser.
- The soap dispenser can be reached from seated on the toilet.
- The height of the soap dispenser is 92cm.
- There is a towel dispenser.
- The towel dispenser cannot be reached from seated on the toilet.
- The towel dispenser is placed higher than 100cm (3ft 3in).
- The height of the towel dispenser is 109cm (3ft 7in).
- There is a hand dryer.
- The hand dryer cannot be reached from seated on the toilet.
- The hand dryer is not placed higher than 100cm (3ft 3in).

Colour Contrast and Lighting

Collapse -

- The contrast between the external door and wall is good.
- The contrast between the internal door and wall is good.
- The contrast between the wall-mounted grab rail(s) and wall is poor.
- The toilet seat colour contrast is poor.
- The contrast between the walls and floor is poor.
- The lighting levels are good.

Baby Changing Facilities

Collapse -

- Baby changing facilities are located within the accessible toilet.
- The baby change table is not set against the wall, permanently fixed at 75cm from the floor.
- The baby change table is not height adjustable.
- The height of the baby change table once extended is 89cm (2ft 11in).



1



2

Standard Toilet(s)

Collapse -

- Standard toilet facilities are available.

Access to Standard Female Toilet(s)

Collapse -

- The female toilet facilities that were surveyed are located on the first floor, in the corridor to the left of the hotel, just past reception.
- The female toilet(s) is/are approximately 16m (17yd 1ft) from the hotel main entrance.
- There is step-free access to the female toilet(s).
- There is tactile and pictorial signage on or near the toilet door.
- An ambulant toilet with wall-mounted grab rails is available.
- There is a horizontal grab rail to the left of the seat and vertical one to the right.
- The wash basin tap type is lever.
- There is not a flashing fire alarm beacon within the toilets.
- Lighting levels are good.
- There is a/are similar standard toilet(s) available.